

FOR SALE

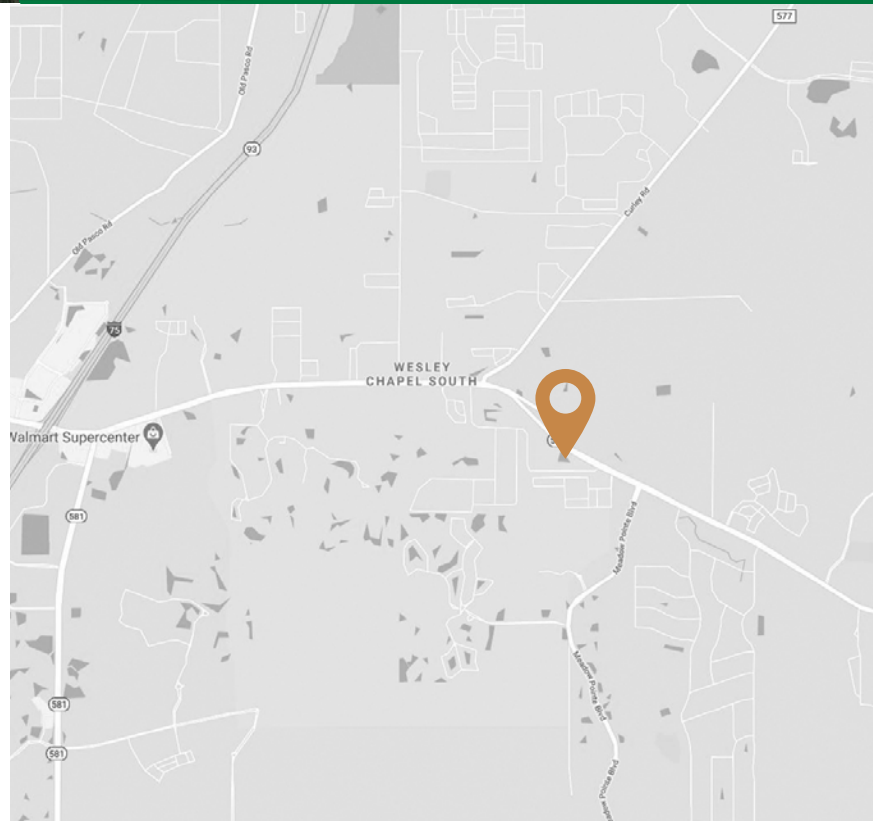
WESLEY CHAPEL DEVELOPMENT LAND



 30846 SR 54, Wesley Chapel, FL 33543

HIGHLIGHTS

- 0.94 Acre site in the middle of new Wesley Chapel development
- Adjacent to Lennar Homes newest 55 unit townhome development
- Located in the heart of significant, new residential growth
- State Road 54 frontage
- Variety of possible uses
- Convenient to I-75, the Grove, Tampa Premium Outlet Malls, Wiregrass Mall, AdventHealth and the Newest Baycare Hospital



SALE PRICE \$595,000

CPR TEAM OFFICE (727) 822-4715

Jim Engelmann, Sales Associate | Jim@CPRTeam.com | (813) 508-4981 (Mobile)

FOR SALE

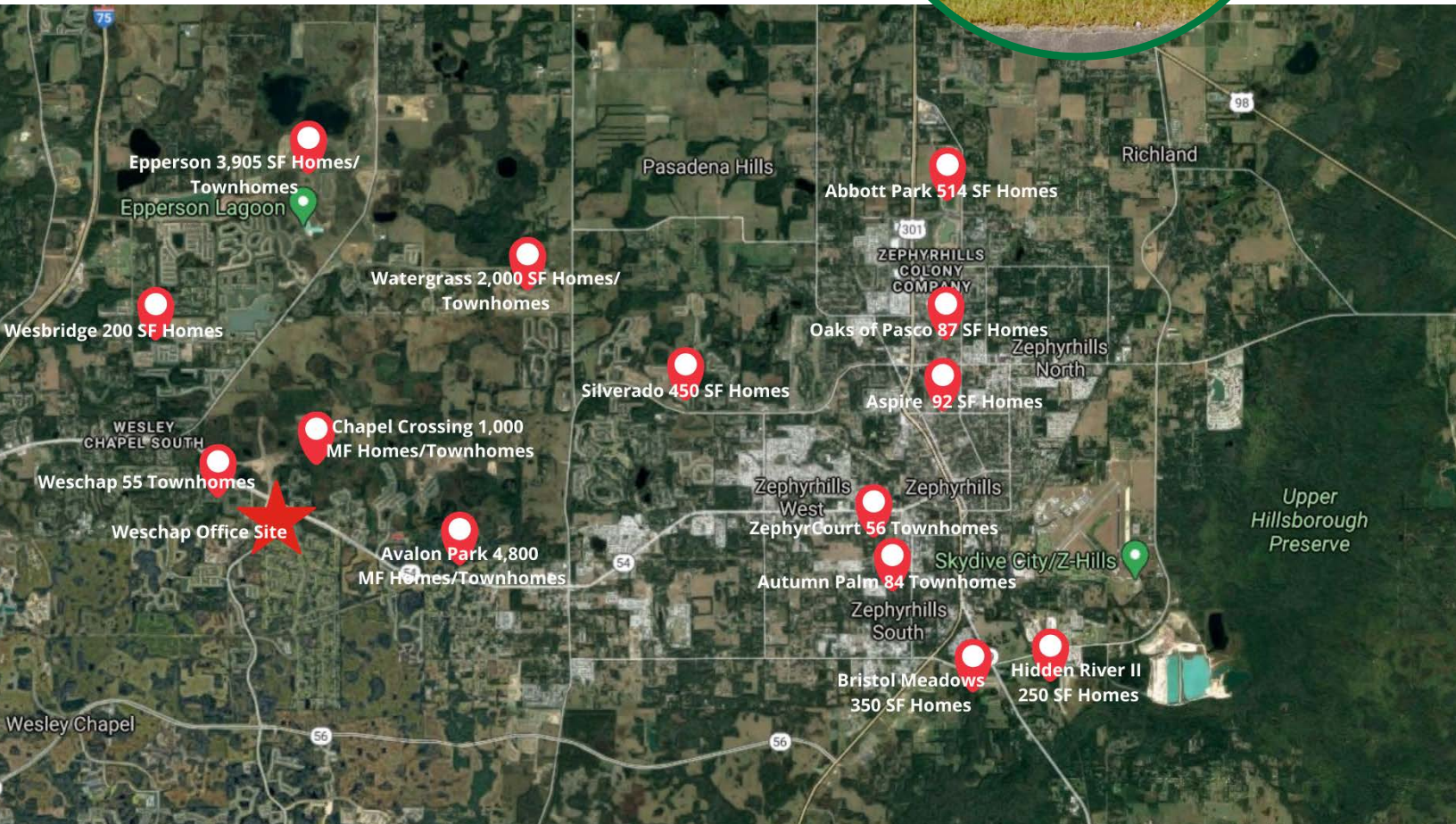
Wesley Chapel Development Site

📍 30846 State Rd. 54, Wesley Chapel, FL 33543



This .94 acre site sits in the middle of tremendous new development in Wesley Chapel. Directly adjacent to Lennar Homes newest 55-unit Townhouse development, and across the street from the Chapel Crossings project, the residential landscape in the area is exploding! This is a great location for daycare, dental or medical office or professional services to handle the needs of the growing population. The current traffic count of 29,000 ADT grows every day as Avalon Park Wesley Chapel expands to fill its 4,800 entitled residences. Convenient to I-75, The Grove, Tampa Premium Outlet Malls, Wiregrass Mall, AdventHealth and the newest BayCare hospital, this property is in a prime location for a myriad of uses.

- Medical office
- Dental office
- Professional services
- Daycare
- Financial services
- Drycleaners
- Veterinarian clinic



*Information herein is not warranted and subject to change without notice.
We assume no liabilities for errors and omissions*