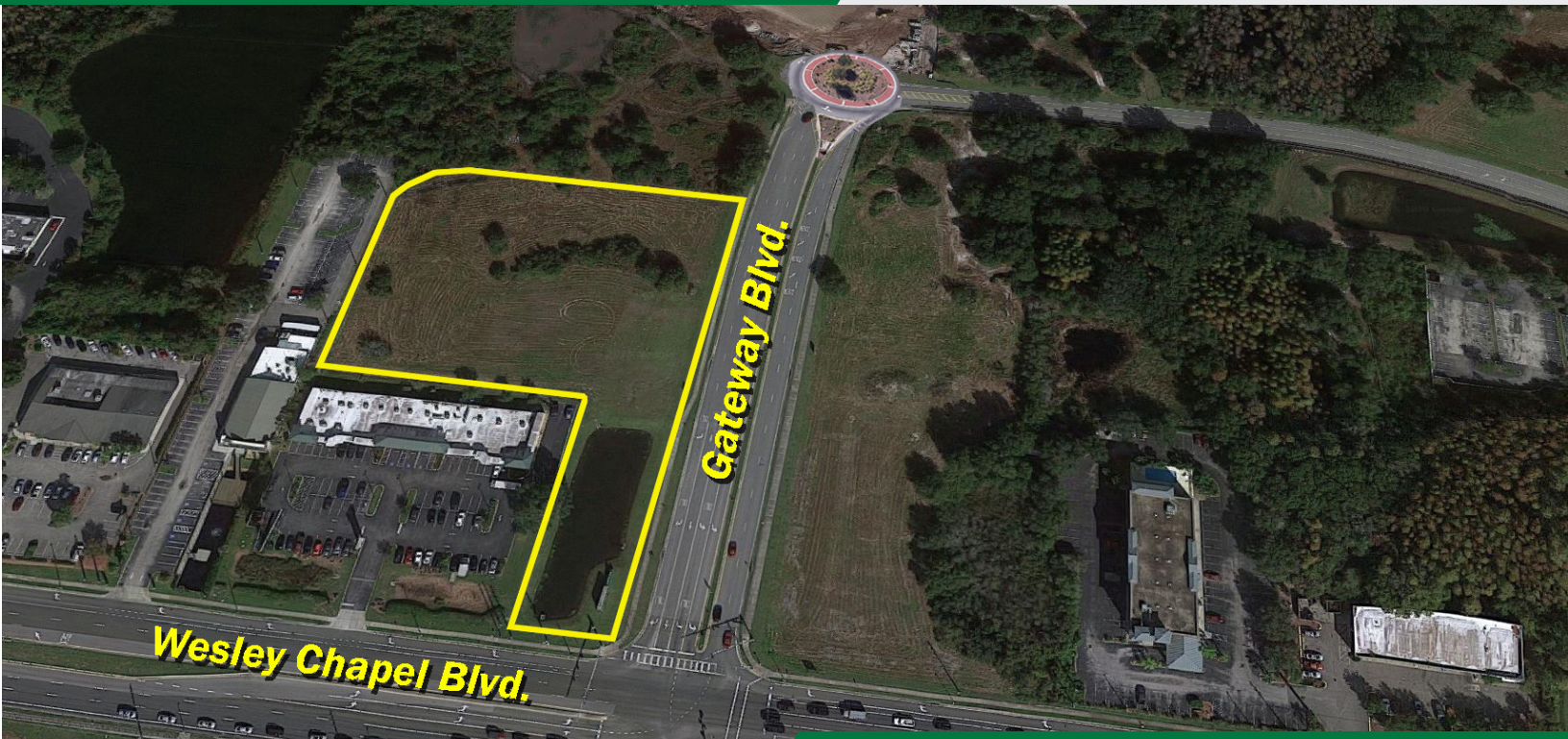


FOR SALE

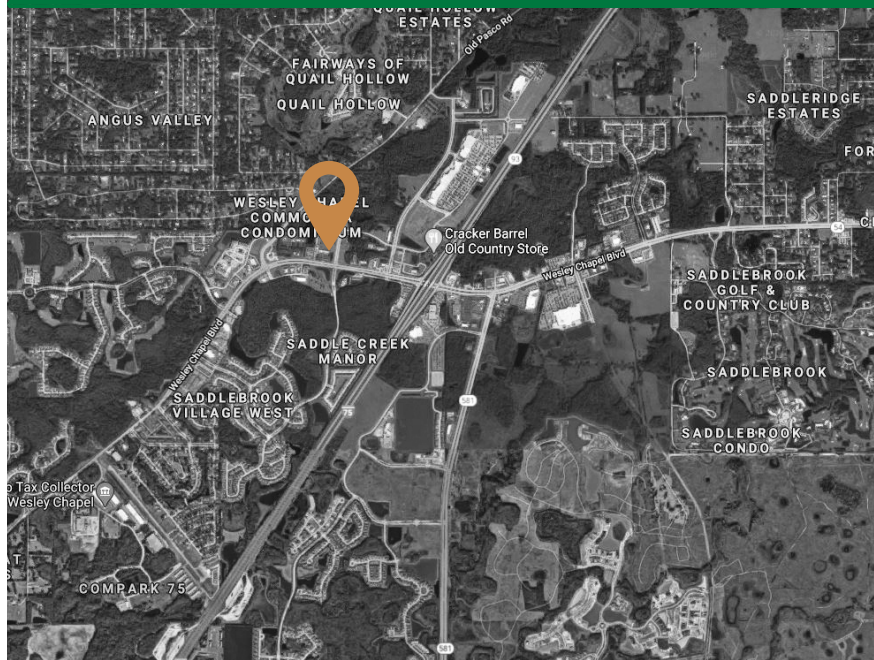
WESLEY CHAPEL COMMERCIAL LAND



HIGHLIGHTS

- 3.51 Acres in one of the fastest growing communities in Florida
- C2 Zoning
- Convenient to I-4 off-ramp
- Located at the entryway to The Grove
- Established growth market
- Main thoroughfare visibility
- Proximity to tourist attractions - WC Sports Complex, Malls and outdoor activities
- Variety of uses possible - Hotel, restaurant, retail

5685 Gateway Blvd., Wesley Chapel FL 33544



SALE PRICE \$2,700,000

CPR TEAM OFFICE (727) 822-4715

Jim Engelmann, Sales Associate | Jim@CPRTeam.com | (813) 508-4981 (Mobile)

FOR SALE

Grove Mall Outparcel

📍 5685 Gateway Blvd., Wesley Chapel, FL 33544



This 3.51 AC site is perfectly located along the Wesley Chapel Blvd corridor, with visibility along this main thoroughfare, and .4 miles from the I4 exit.

Gateway Blvd is one of two access points to The Grove, a thriving Shopping Center home to several national and regional retailers. Recent media announcements include the addition of Krate, a container park that will be packed with 55 restaurants and retail shops, as well as a stage for live entertainment. Additional new developments include a mini-golf course, waterpark and an entertainment venue with movie screens, playground and a variety of activities for the whole family.

With its C2 Commercial zoning, this property is perfectly positioned to take advantage of the proximity to this family destination, as well as the new Wesley Chapel Sports Complex, Wiregrass and Tampa Prime Outlet Malls. The site is ideal for Hotel, restaurant and other retail uses.

Wesley Chapel is one of the fastest growing communities in Florida, and this property is prime for new development.



*Information herein is not warranted and subject to change without notice.
We assume no liabilities for errors and omissions*