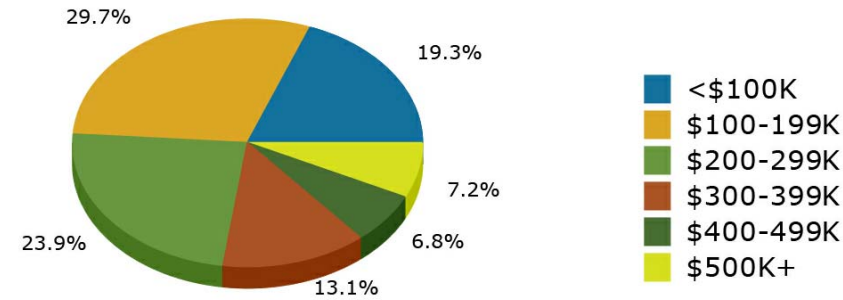
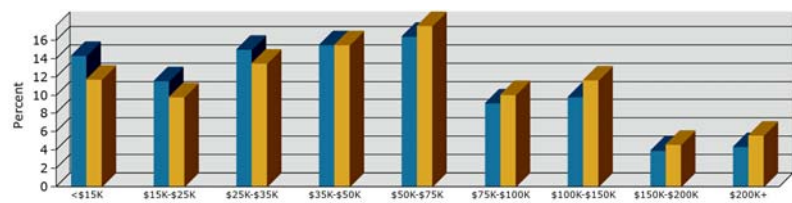


Demographics

5 Minute Drivetime - 2018 Home Values



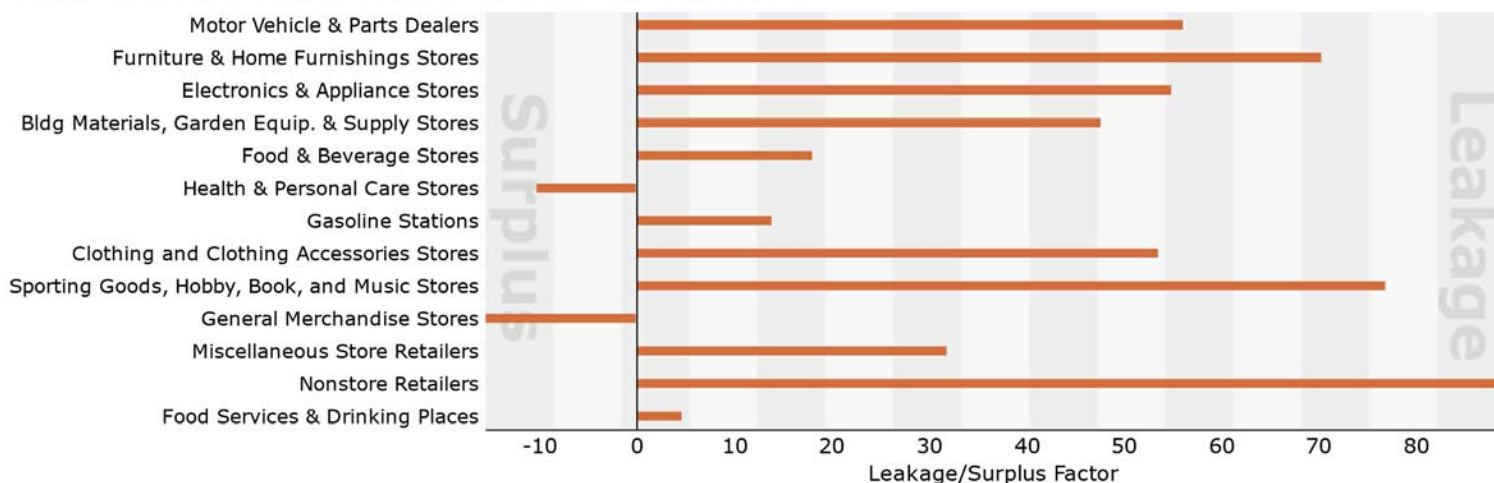
5 Minute Drivetime - Household Income



5 Minute Drivetime Retail Marketplace Profile

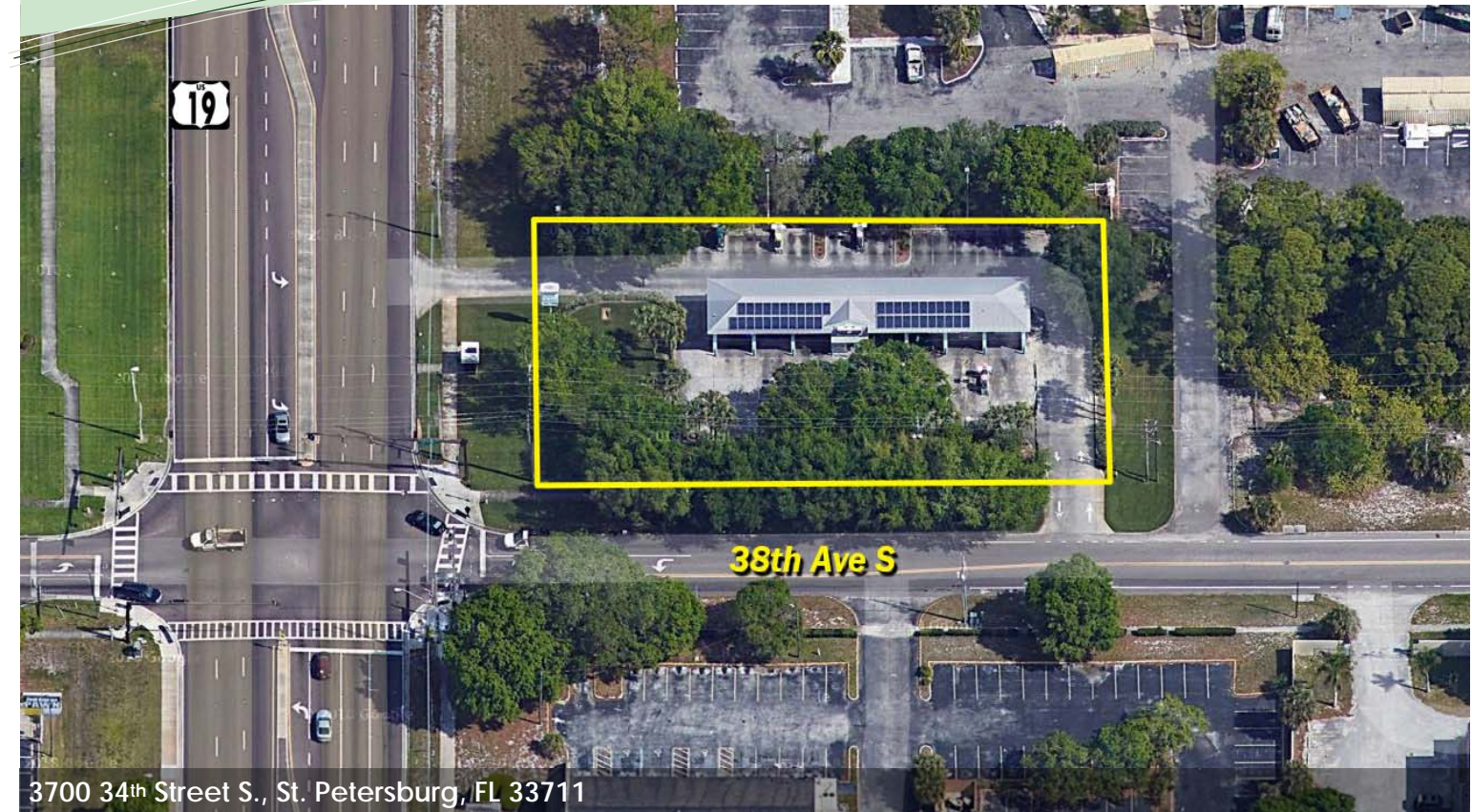
Summary Demographics						
2018 Population						23,301
2018 Households						9,604
2018 Median Disposable Income						\$36,819
2018 Per Capita Income						\$28,067
2017 Industry Summary						
NAICS	Demand (Retail Potential)	Supply (Retail Sales)	Retail Gap	Leakage/Surplus Factor	Number of Businesses	
Total Retail Trade and Food & Drink	44-45,722	\$297,543,092	\$200,389,706	\$97,153,386	19.5	143
Total Retail Trade	44-45	\$269,390,470	\$174,761,540	\$94,628,930	21.3	104
Total Food & Drink	722	\$28,152,622	\$25,628,166	\$2,524,456	4.7	39

2017 Leakage/Surplus Factor by Industry Subsector



Information herein is not warranted and subject to change without notice. We assume no liabilities for errors and omissions.

Skyway Marina District Development Opportunity



- Great redevelopment opportunity in a hot new market - *The Skyway Marina District*
- Perfect site for a fast food restaurant, surrounded by a lot of new development
- Site is located at a signalized corner with over 30,000 vehicles daily
- 0.7 Acres of land - all usable - with access from both US 19 and 38th Ave. S.
- Great visibility, accessibility, and signage
- RC-1: Retail Center Zoning suitable for restaurant, brew-pub, bank, pharmacy, and a variety of retail or office uses
- Very strong demographics

Sale Price: \$995,000

Skyway Marina District

The Skyway Marina District is St. Pete's new Destination District. Located directly between downtown St. Petersburg, and the upscale communities of St. Pete's award-winning white sand beaches, the district has seen a recent explosion of development and growth.

- Ceridian, Jabil, Kobie Marketing and Abbey Adams, LLP have a total of 1,500 jobs within a half mile from the site
- Approximately 800 apartments in 3 new developments are planned within the district, including:
 - ◆ *Mixed Use development of 9 acre, former Home Depot site under construction*
 - ◆ *Upcoming Mixed Use development of former K-mart site*
- Public streetscape improvements will be undertaken in 2019 and 2020 throughout the district
- Newly Remodeled Retail Sites including: Bay Pointe Plaza Publix, McDonalds, Wendy's, Burger King, Taco Bell
- \$10 million remodel of Grand Villa of St. Petersburg Retirement Community
- Maximo Marina Redevelopment
- New \$4 million Dialysis Center
- New Bayfront Medical Walk-in Clinic Coming Soon
- New Wawa's Under Construction
- New retail development with pharmacy and Out of the Closet Thrift Store
- New Restaurants in the district include:
 - ◆ *Berlin's Doener*
 - ◆ *The Getaway at Maximo Marina*
 - ◆ *Stoned Pizza*
- Skyway Marina District is close to Boyd Hill and Clam Bayou Nature Preserves, Maximo and Fort DeSoto Parks, O'Neal's and Maximo Marinas and numerous other recreation opportunities.

Area Retail

